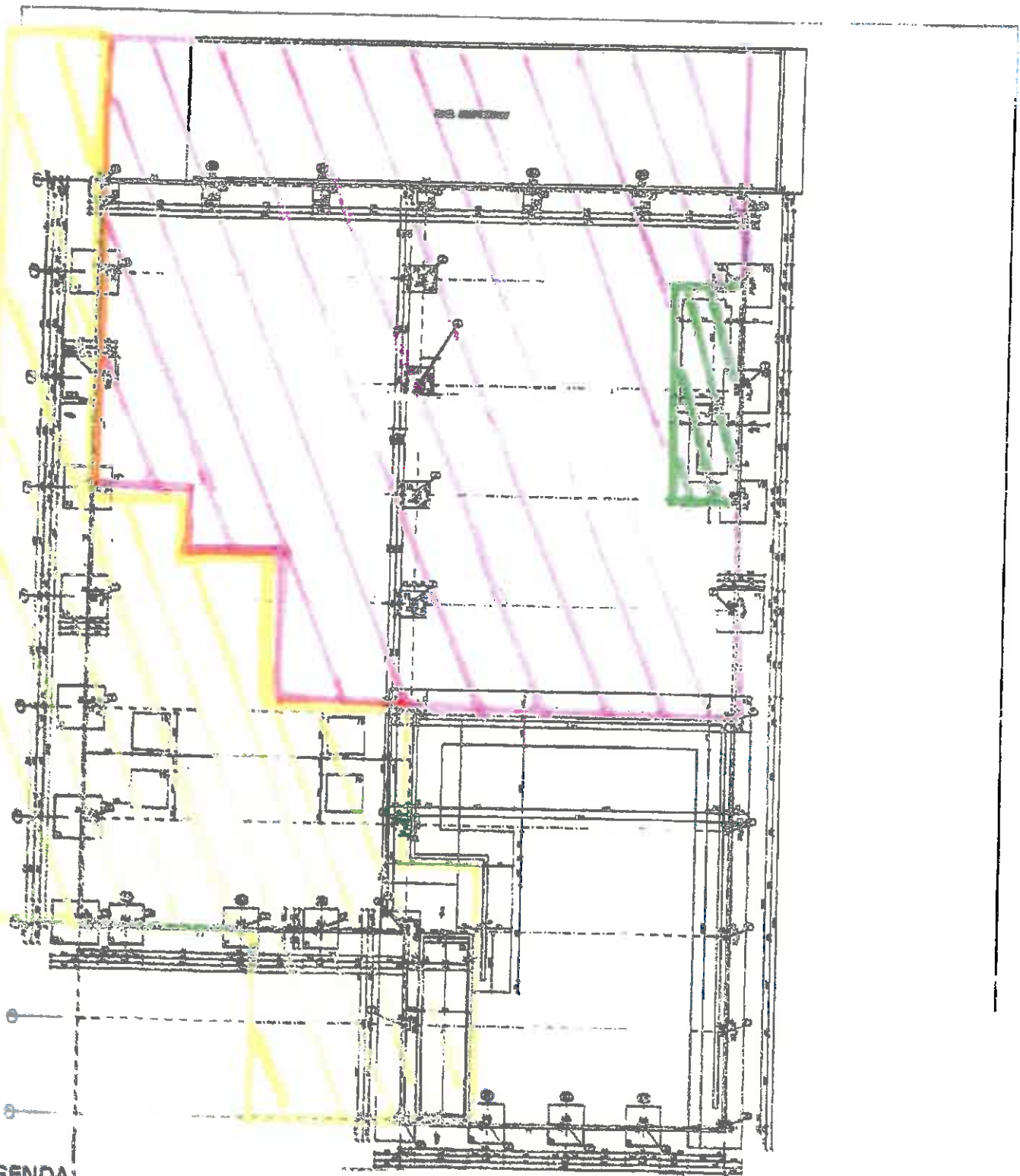





Załącznik - hala sortowni

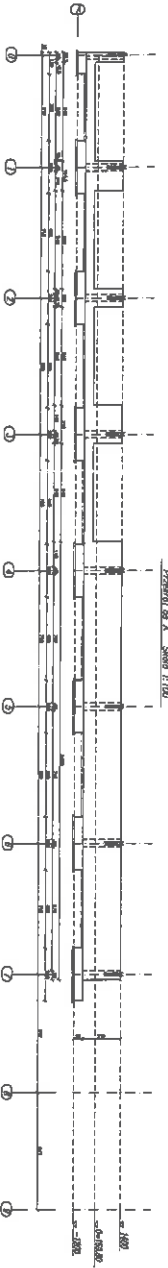


LEGENDA:

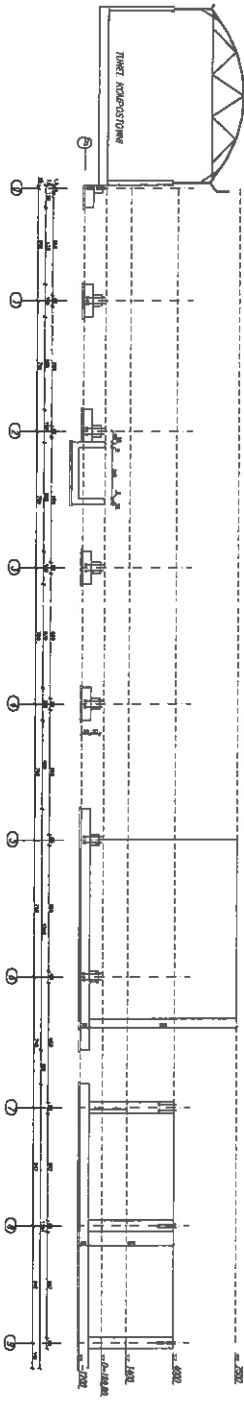
-  miejsce posadowienia maszyn i urządzeń do mechanicznego przetwarzania odpadów
-  miejsce wyznaczone pod posadowienie maszyn i urządzeń do sortowania odpadów
-  sterownia

T. Opiński

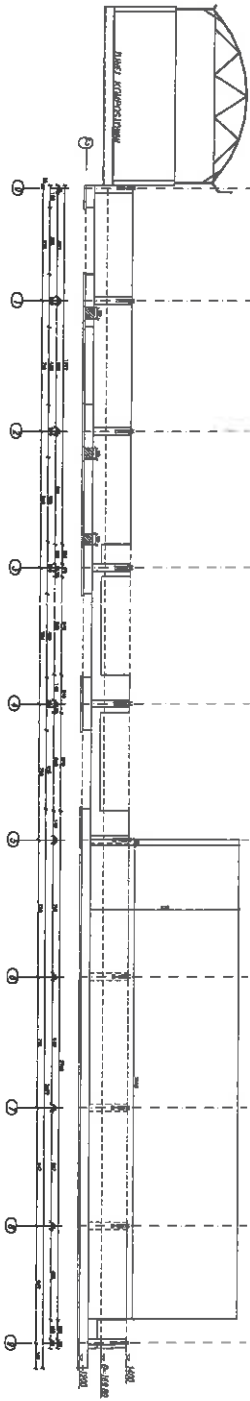
Front of A, Scale 1:100



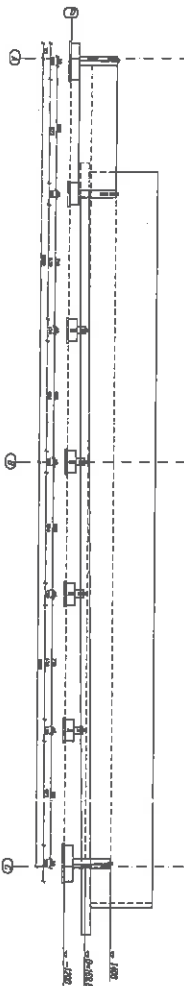
Front of B, Scale 1:100



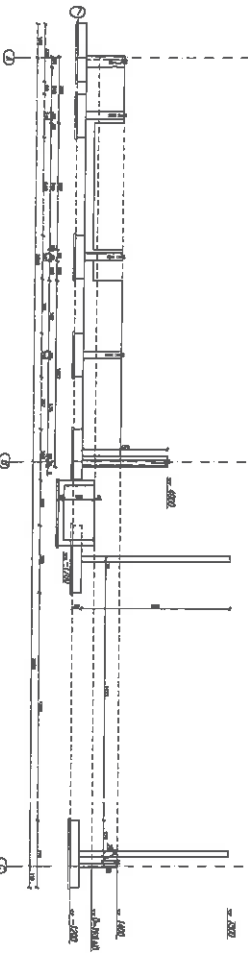
Front of C, Scale 1:100



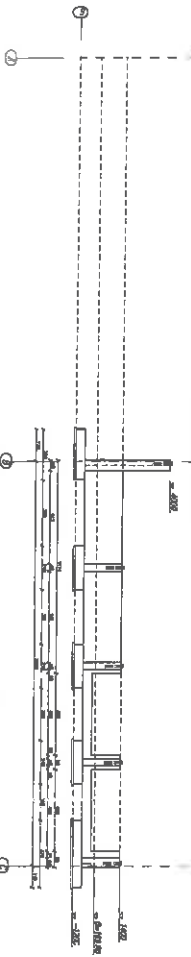
Front of 0, Scale 1:100



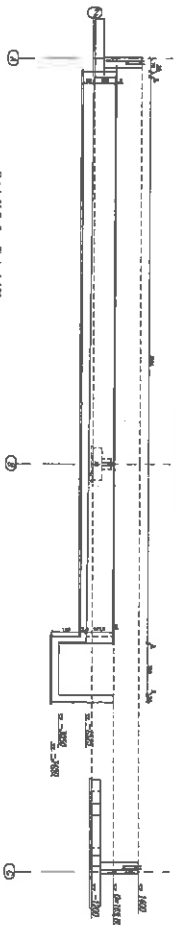
Front of 7, Scale 1:100



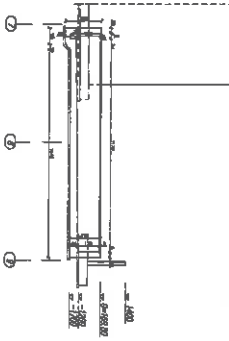
Front of 9, Scale 1:100



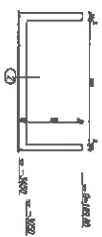
Front of 4, Scale 1:100



Front of C-C, Scale 1:100



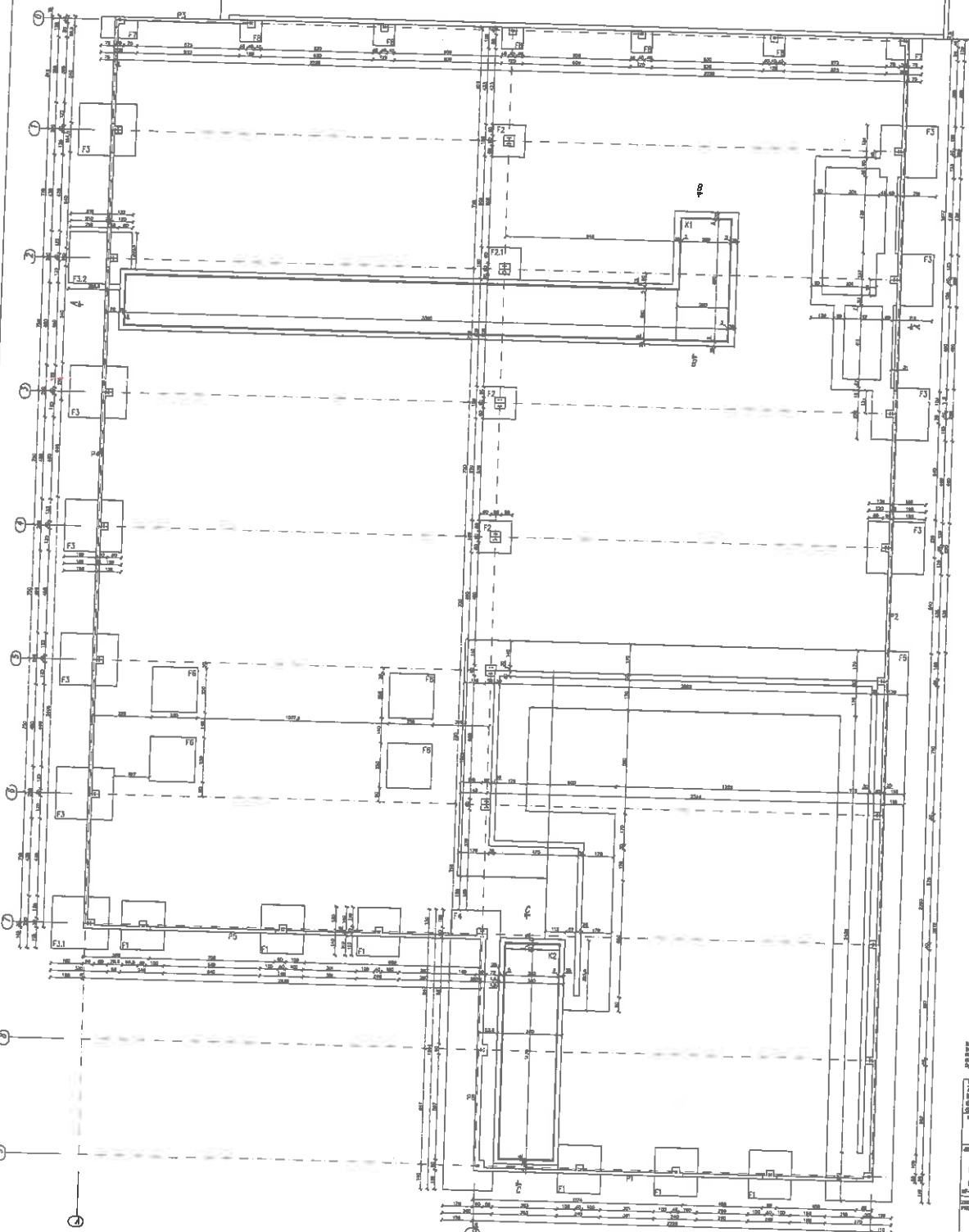
Front of B-B, Scale 1:100



PROJEKTANT: T. Chiriac
PROJEKT: "ALION PROJECT"
OBJEKT: "ALION PROJECT"
ADRESA: "ALION PROJECT"
DATA: "ALION PROJECT"
STADIUM: "ALION PROJECT"
PROJEKTANT: T. Chiriac
PROJEKT: "ALION PROJECT"
OBJEKT: "ALION PROJECT"
ADRESA: "ALION PROJECT"
DATA: "ALION PROJECT"
STADIUM: "ALION PROJECT"

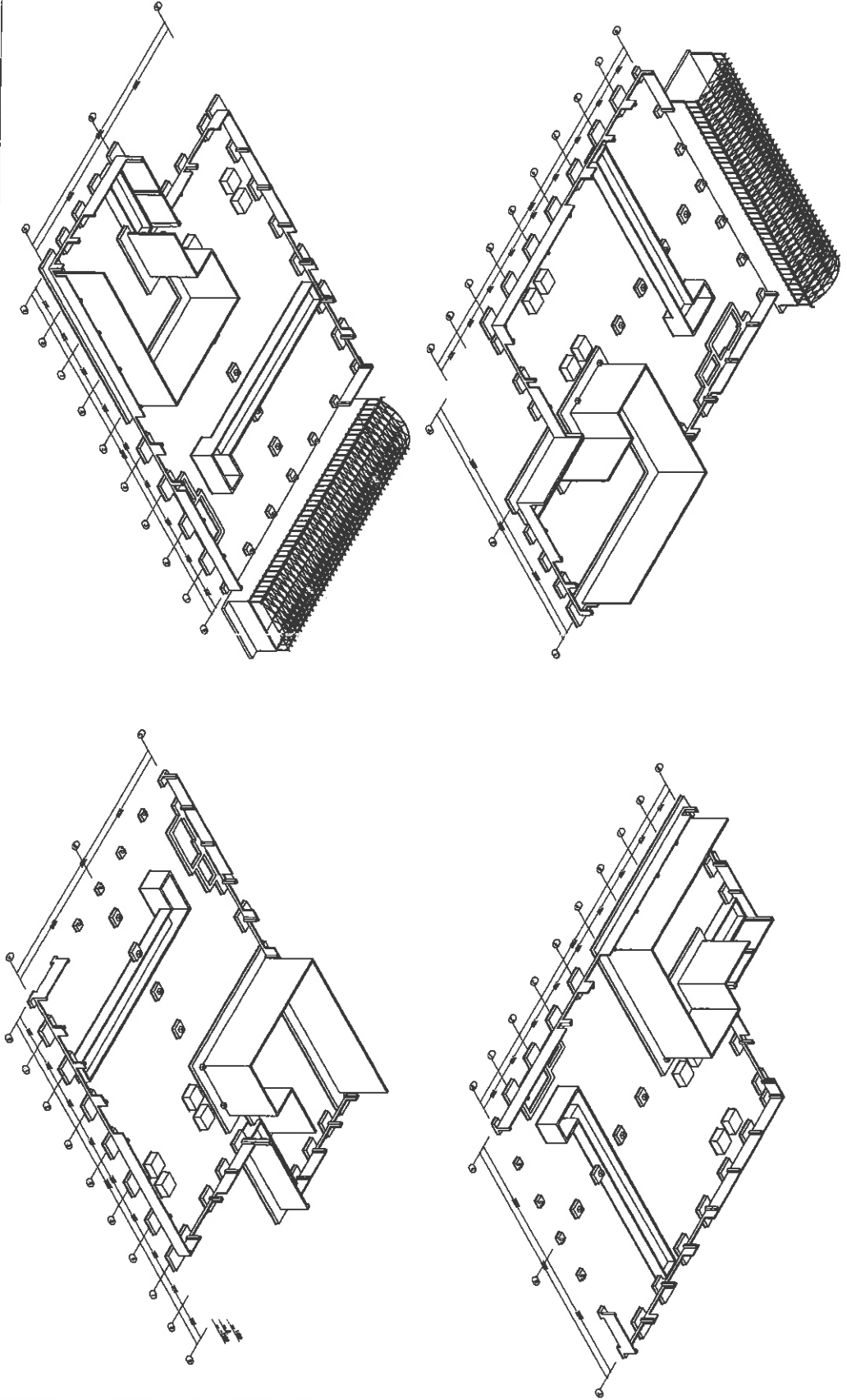
T. Chiriac

TUNEL KOMPOSTOWY



Nazwa inwestycji: ...
 Rodzaj inwestycji: ...
 Adres inwestycji: ...
 Inwestor: ...
 Projektant: ...
 Data: ...
 Skala: 1:100
 Tytuł: HALA SORTOWANI
 Data: wrzesień 2015
 Kategoria: ARCHITEKTURA BUDOWLANA
 Numer: 01.01
 Strona: 6

T. Offenhart



Projektant: **PROJEKT**

Wykonawca: **PROJEKT**

Obiekt: **HALA SORTOWNI**

Adres: **ul. Białostocka 18**

Miejscowość: **Warszawa**

Skala: **1:200**

Wzrost: **1:200**

Archiwizacja: **K.03**

Strona: **2**